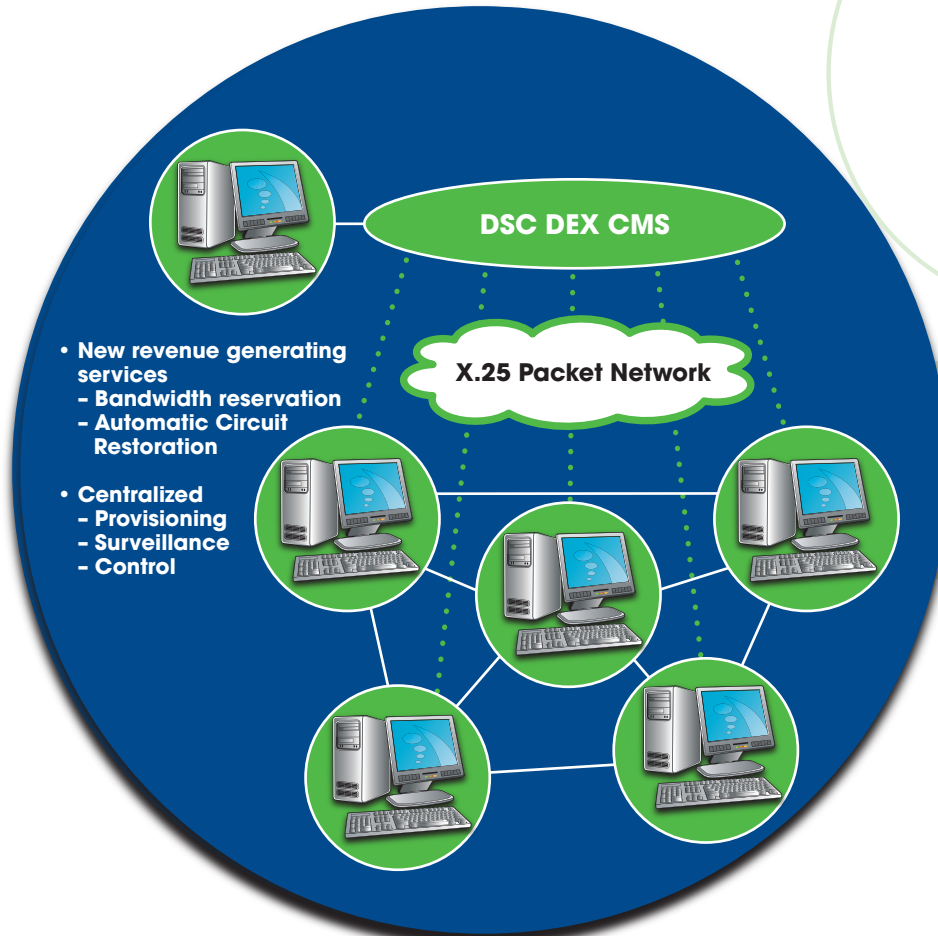


DSC DEX

Central Management System(CMS)



Multi-user software system that manages digital cross-connect system in a network

General Description

DSC DEX Central Management System (CMS) is a multi-user software system that manages digital cross-connect systems in a network. Its menu-driven user interface with on-line help facilities enables a user to monitor, provision and control the managed cross-connects from any CMS leased line or dial-up.

Fault Management

DSC DEX CMS permits the network operator to view alarms as they occur, while the system automatically logs and reports on alarm status. The extensive reporting capability becomes a powerful analysis tool for isolating network problems. The DSC DEX CMS provides a single view of the overall health of the transmission network. CMS can also forward network alarms to upstream operational support systems.

Configuration Management

A DSC DEX CMS operator can be given a complete set of menu-driven commands for configuring the managed network element. The system can audit a managed digital cross-connect to provide reports on network inventory and to update the DSC DEX CMS database.

Customer Controlled Configuration

Three-level partitioning of network bandwidth allows a network provider to give end-users control of their portion of the network. In addition to the ability to reconfigure their portion of the network, end-users can also receive automatic notification of service-affecting problems and request pre-formatted reports covering their network. With these enhanced capabilities, an end-user enjoys the look and feel of a private network while gaining the cost advantages of the larger public network.

Automatic Alternate Routing

DSC DEX CMS permits alternate routing to be defined for each circuit. This alternate routing is automatically implemented if a failure is detected. With Preplanned Alternate Routing, DSC DEX CMS equipment and facility utilization

- Faster response to service demand changes
- Simple configuration changes
- Reduced inventory
- Reduced training

Call or visit us at
800 • 326 • 4949 or
www.telmarnt.com

Corporate Headquarters

901 Jupiter Road
Plano, TX 75074
O: 972 • 836 • 0400
F: 972 • 836 • 0430
sales@telmarnt.com

DSC DEX

Central Management System

automatically disconnects a circuit that has failed and connects a new circuit that has been previously defined to replace the failed circuit. Up to five alternate circuits can be specified in order of priority to cover various contingencies. Because the alternate routes are chosen by circuit name, the alternate circuits may have different endpoints than the normal route. This feature can be an effective tool to provide alternate routing to a back-up data center in the event that communications to the normal data center are lost.

With Dynamic Alternate Routing, DSC DEX CMS automatically disconnects a point-to-point circuit that has failed and reconnects the original endpoints using Auto Route Feature and replaces the failed circuit. The Auto Route can be configured to utilize the network bandwidth permanently assigned to that customer, or it can use usage-sensitive bandwidth if no permanently assigned bandwidth is available.

Bandwidth Management

DSC DEX CMS includes powerful tools for managing the available bandwidth in the network. Bandwidth is assigned to one of three pool types. The permanent pool bandwidth is assigned to a specific end-user's network. The temporary pool bandwidth is used for bandwidth-on-demand services. This bandwidth can be reserved and used by customers who are billed for its usage. The spare pool bandwidth is capacity that has been installed but not yet assigned to either a permanent pool or the temporary pool. DSC DEX CMS provides management reports for maintaining adequate capacity in each of the pools to meet projected bandwidth requirements.

Schedules and Reservations

The Schedules and Reservations feature permits circuit connections and disconnections to be scheduled in advance, either on a one-time basis or a recurring basis. Reservations are used to reserve bandwidth, on a one-time or recurring basis, from the temporary pool.

Performance Management

With the DSC DEX CMS, the network operator can retrieve, display and clear performance-monitoring data from the cross-connect network. This information can be formatted into a report that allows tracking over time. Performance thresholds can also be set remotely through CMS.

Accounting Management

DSC DEX CMS automatically records transactions such as the connection or disconnection of circuits and the usage of bandwidth from the temporary pool. The billing even records that are generated can then be used by a billing processor to generate bills for network usage.

Security Management

In the comprehensive security management system, the system administrator can define for each user the commands that the user is authorized to perform. For each command, a user can be allowed to view, change, add or delete information or any combination of these functions.

User Interface

Each user is presented with a menu-driven terminal interface on a VT100* or VT220* (or compatible) terminal. One portion of the screen forms a scrolling window in which any alarms and responses from the managed network elements are presented to the user. In another portion of the screen, the user can select from various menus to choose an operation. The presentation includes forms for the user to fill out to perform the requested operation.

Network Compatibility

DSC DEX CMS utilizes an X.25 interface to communicate with the digital cross-connects that it manages. The inherent error recovery and automatic routing of the X.25 standard provide efficient and reliable links to each of the managed network elements. However, in the event of a failure of an X.25 link, DSC DEX CMS can automatically transfer control to a predefined alternated link.

Computer Platform

DSC DEX CMS operates on a wide range of Sun Microsystems SPARC® and Digital Equipment Corporation VAX® processors. The model of the platform can be sized to meet the initial requirements and yet can be grown incrementally as needs increase.

Corporate

Headquarters

901 Jupiter Road
Plano, Texas
O: 972 • 836 • 0400
F: 972 • 836 • 0430
sales@telmarnt.com

Operations and Repair

325 Veterans Memorial
Highway
Council Bluffs, IA 51501
O: 800 • 326 • 4949
F: 712 • 366 • 1867
repair@telmarnt.com

7710 North 30th Street
Tampa, FL 33610
O: 813 • 237 • 2020
F: 813 • 237 • 4773

99 Signet Drive
Suite 200
Toronto, Ont M9L 1T6
O: 416 • 749 • 0110
F: 416 • 744 • 5208

Additional

Locations Throughout

North America, EMEA,
South America, Asia

Call or visit us at
800 • 326 • 4949 or
www.telmarnt.com

*Specifications subject to change without notice